



Key features

- 3 bedrooms
- 3 bathrooms
- 1 reception room
- Kitchen / breakfast room
- Balcony

Property description

We are favoured with instructions to offer to the market, these three newly built mews houses situated just off the vibrant Acton High Road.

These architect designed properties span almost a 1000sqft each and offer 3 double bedrooms, 2 en-suites plus a large state of the art family bathroom.

A short walk from Acton Town station, these are perfectly located to provide, access to all of London.

MEMBERS ONLY

PRO MEMBERSHIP

The properties are listed on Rightmove for £650,000 but we are direct with vendor who wants to cut a deal on at least one of the units for 'cash purposes' and we can offer below £550,000 saving a whopping £100,000 on listed price.

Locarno Road, W3

£650,000 ⓘ

PROPERTY TYPE

🏠 Mews

BEDROOMS

🛏 ×3

BATHROOMS

🚿 ×3

SIZE

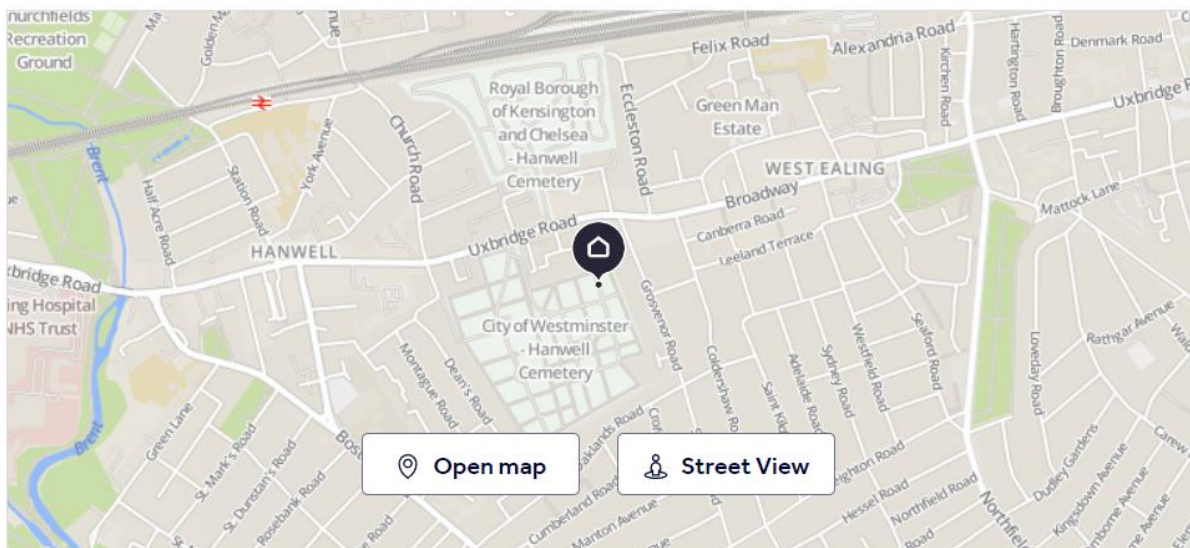
📏 987 sq. ft.

(92 sq. m.)

TENURE ⓘ

Freehold

Locarno Road, W3



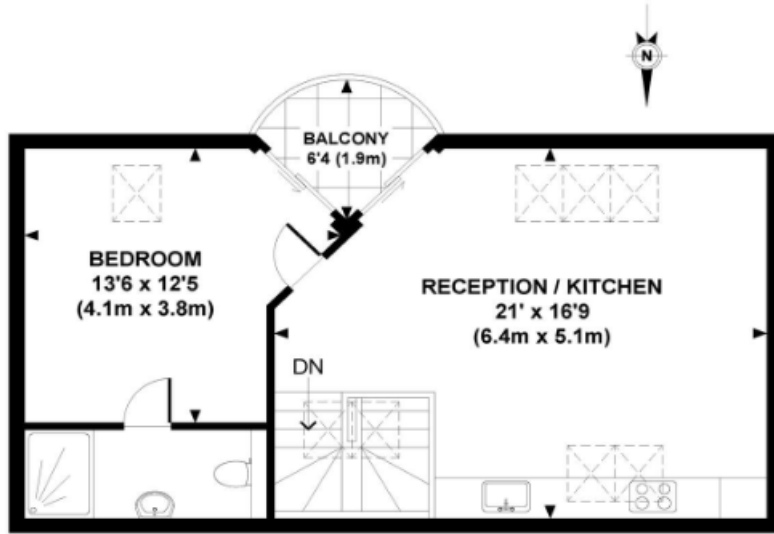
🚉 Stations

🎓 Schools

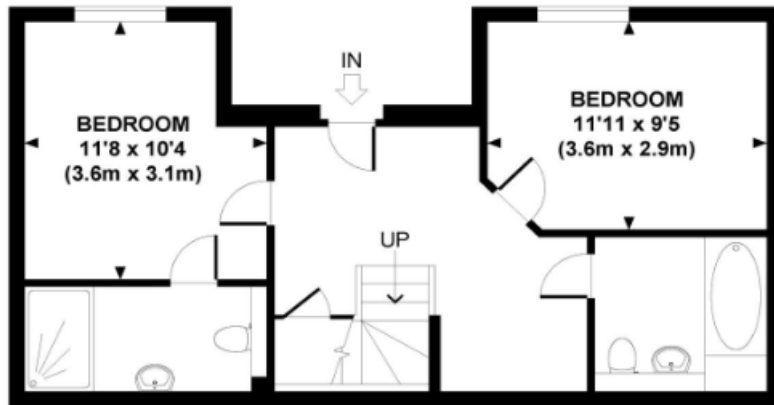
NEAREST STATIONS ⓘ

- 🚉 Acton Central Station 2.9 miles
- 🚉 South Acton Station 2.6 miles
- 🚉 Acton Town Station 2.2 miles

Locarno Road, W3



FIRST FLOOR



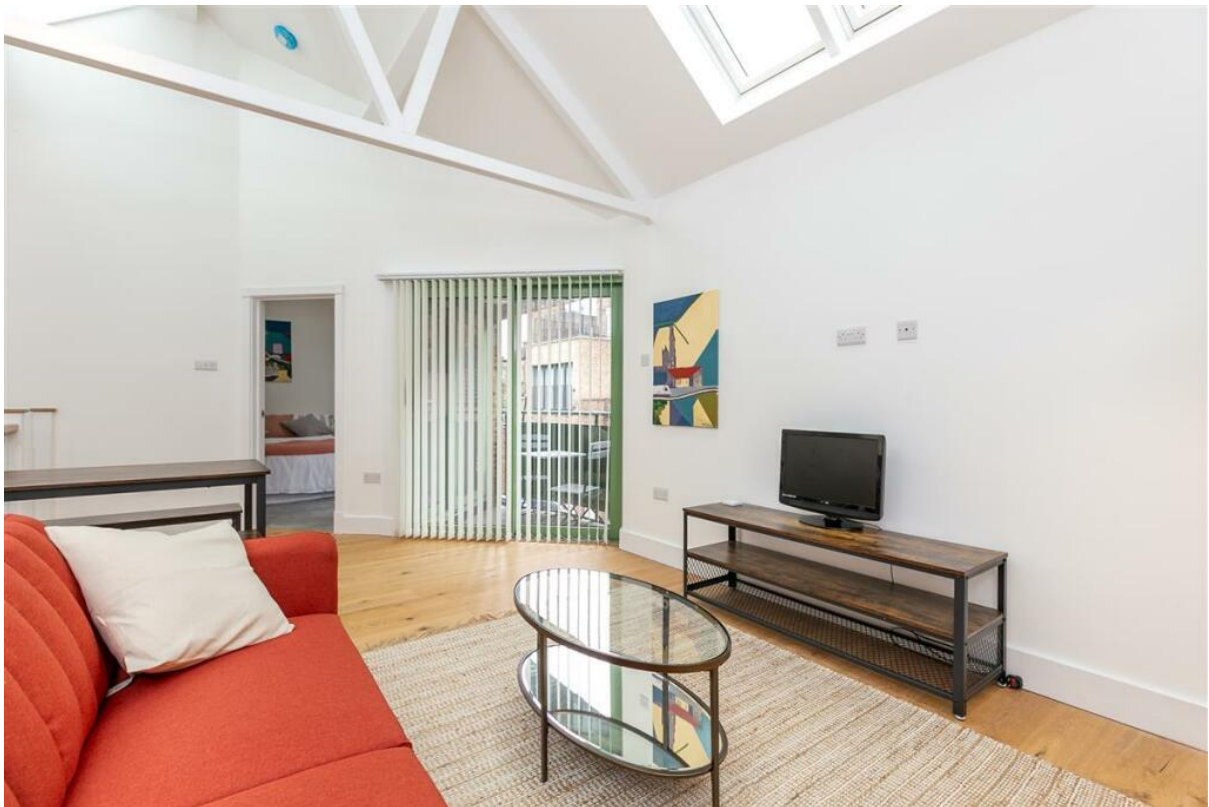
GROUND FLOOR

APPROXIMATE GROSS INTERNAL AREA 987 SQ FT / 91.7 SQ M

Whilst every attempt has been made to ensure the accuracy of this floor plan, measurements of door, windows, rooms and all other items are approximate. No responsibility is taken for any error, omission or mis-statement. This floor plan is for illustrative purposes only, and should be treated as such.

MEMBERS ONLY

PRO
MEMBERSHIP



MEMBERS ONLY PRO MEMBERSHIP



**MEMBERS
ONLY** PRO
MEMBERSHIP



**MEMBERS
ONLY** PRO
MEMBERSHIP



**MEMBERS
ONLY** PRO
MEMBERSHIP

